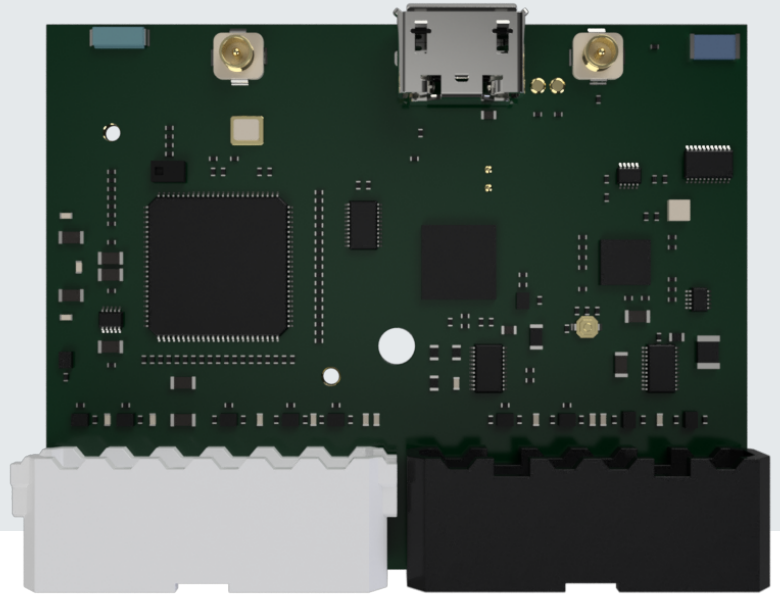


# SABRE INLINE



The SABRE INLINE is a combination Bluetooth Low Energy (BLE) reader with access controller management capabilities. By presenting a virtual credential within the SABRE activation range, authorized users can inject user data from their mobile device into existing legacy reader wires. The SABRE INLINE provides mobile access upgrades for existing proximity and smartcard building reader systems.

## ✓ Combination Reader Controller

Complete BLE reader and controller functionality, perfect for upgrade to legacy building access systems.

## ✓ Multiple I/O Interfaces

Includes 5v input/output trigger, internal/external antennas, Wiegand, RS-485, and optional Wi-Fi module.

## ✓ OTA (Over-the-air configuration)

Firmware updates and configuration management can be made over-the-air through the Safetrust Wallet or optional Wi-Fi module.

## ✓ Configurable Extendable Range

Activation range can be configured based on environmental requirements. Where an additional range is required, the module supports the use of external antennas for both the BLE and optional Wi-Fi interfaces.

## ✓ Online/Offline Operation

The Safetrust Credential Manager provides regular data exchanges to the Safetrust Wallet and the SABRE INLINE, eliminating the need for constant online connectivity for authentication.

## How does it work?

---

The SABRE INLINE is spliced into existing door reader wiring between the controller and door. Users are assigned virtual credentials for the specific Identity System. When a mobile device with the corresponding credential comes into range of the SABRE, the encrypted credential is sent via BLE. The SABRE INLINE transfers BLE user data to existing Wiegand or RS-485 and which then presents at the controller exactly as a plastic credential.

## Installation

---

Installation of the SABRE INLINE involves powering the INLINE module with 12VDC and splicing the Wiegand or RS-485 line between the door and controller in an in/out wiring configuration. Whether a user presents a proximity card, smartcard, or virtual credential with the Safetrust Wallet, building access is processed through the system controller and the door is released.

## Tech Specs

---

Description	The SABRE INLINE is a combination Bluetooth Low Energy (BLE) reader with access controller management capabilities.
Hardware	Bluetooth Low Energy 2.400 GHz - 2.4835 GHz
Mobile Operating Systems	Apple iOS 9.0 or later and Android 4.4 and up on devices with the Safetrust Wallet
Compatibilities	Most popular 125kHz proximity formats from HID <sup>®</sup> **, Indala <sup>®</sup> **, AWID <sup>®</sup> , GE Casi <sup>®</sup> , and Honeywell <sup>®</sup>
Output	Wiegand or RS-485 (in / out)
Power Source	12 VDC
Bluetooth Range	1 to 100 ft (.30 to 30 m)
Encryption	AES 256, x.509
Case Dimensions	5.48" x 2.65" x 1.57" (139.3 x 67.3 x 40.1mm)
Antenna Length	Optional external antenna for longer range, -5dB (3.15" / 80mm), -15dB (7.78" / 200m)
Certifications	FCC, CE, RCM, IC
Warranty	2 Years (limited warranty, review warranty for complete details)

\*Technical data subject to change without notice. To order, contact [sales@safetrust.com](mailto:sales@safetrust.com) or visit [www.safetrust.com/shop](http://www.safetrust.com/shop).

