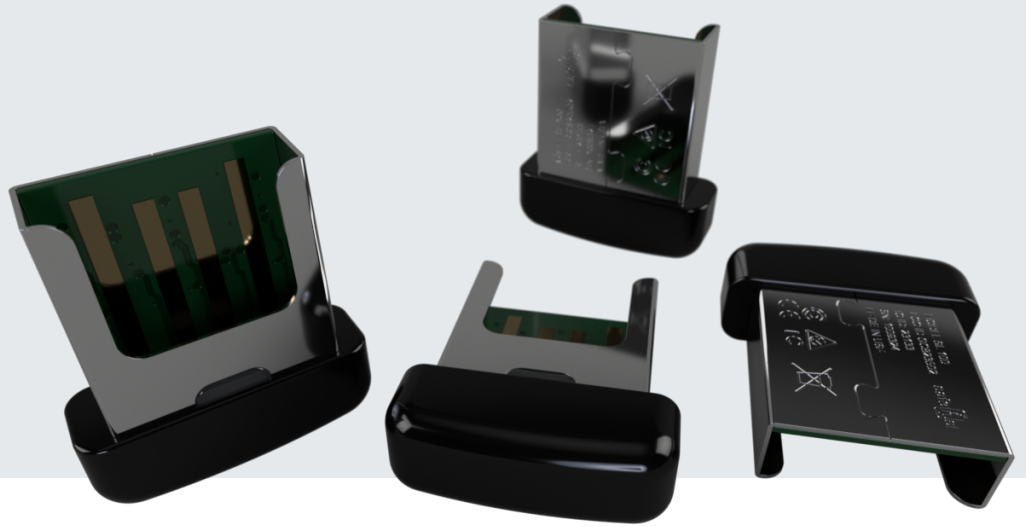


# SABRE USB



As part of the SafeLogon solution by Safetrust, the SABRE USB marries convenience, high-security authentication, and information protection into a simple tap of a smart device on your computer or printer. SafeLogon is designed to work with what you already have such as Active Directory, Windows Hello, Linux, Citrix, Virtual Desktops, MacOS and other environments meaning the upgrade from traditional authentication to virtual credentials is easy!

## ✓ CCID Compliant

Natively supported by Windows, MAC, and Linux with no requirement to install additional device drivers.

## ✓ Supports Multiple Emulation Modes

Can be firmware enabled to run as a smartcard reader or in keyboard wedge mode for custom applications.

## ✓ Frictionless Access

Configurable activation ranges for auto-authenticating and disconnection, meaning your mobile device never needs to leave your pocket.

## ✓ Configurable Range

Can be configured for individual environments with adjustable connection and disconnection range.

## ✓ Small Form Factor

Small form factor makes the SABRE USB suitable for mobile users with laptops.

## ✓ Onboard LED

Can be configured to display different colour LED when powered and in use.

## How does it work?

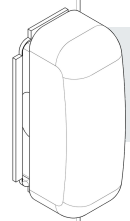
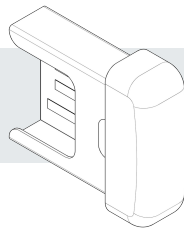
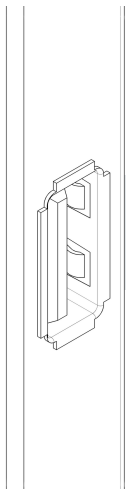
---

When installed, the SABRE USB appears to the operating system as a CCID compliant smartcard reader. When a mobile device running the Safetrust Wallet connects to the SABRE USB, the operational system natively accepts the virtual credential stored within the Wallet as a NIST SP800-73 (PIV) secure smart card. Authentication formats include certificates (SP800-73), smartcard emulation, or FIDO.

## Installation

---

The installation of the SABRE USB is a three step process. There is no configuration or additional set up required on the USB once plugged into the device. Administrators simply need to register the USB (sensor) to an Identity System in the Credential Manager and installation of the SABRE is complete.



### 1. Locate the USB port

Find any spare USB port on your computer or printer to plug the SABRE USB into.

### 2. Plug in the SABRE USB

Press the SABRE USB into place. The operating system will recognize the USB as a CCID compliant smart card reader.

### 3. Ready to go!

The SABRE USB can now be registered in the Safetrust Credential Manager for use within the organization.

## The affordable way to add mobile support to logical environments



### Tech Specs

Hardware	BLE 2.400 GHz - 2.4835 GHz , CCID
Desktop Operating Systems	Windows 7 and above, MacOS Version 10.11" El Capitan" or higher, Linux: REL 6, CentOS v7, Ubuntu 17.10 or above
Mobile Operating Systems	Apple iOS 9.0 or later and Android 4.4 and up on devices with the Safetrust Wallet
Smartcard emulation from a mobile device (Contact)	ISO/IEC 7816 CCID compliant, T=0, T=1 protocol support, Communication speed up to 244, 105 bps (PPS, FI parameter)
Smartcard emulation from a mobile device (Contactless)	Emulation of ISO 14443A and B smartcards from the mobile device, ISO 14443 Part 1 and 4 compliant, MIFARE: Classic, DESFire, Communication speed: up to 848 Kbit/s
LED	RGB (Tri colour)
Network Access Credentials	NIST 800-73 certificate authentication, smartcard emulation, FIDO
Power Source	5 VDC
Bluetooth Range	1 to 100 ft (.30 to 30 m)
Operating Conditions	-31 to 149°F (-35 to +65°C)
Weight	0.17 oz (5 g )
Dimensions	External to USB port: 0.59" x 0.20" x 0.20" (15 x 5 x 5 mm) Total size: 0.71" x 0.3" x 0.28" (18 x 7.5 x 7 mm)
Encryption	AES 256, x.509, NIST 800-73
Regulatory Compliance	Functional: FCC, IC, CE, RCM Environmental: RoHS2, WEEE
Warranty	2 Years (limited warranty, review warranty for complete details)

\*Technical data subject to change without notice. To order, contact [sales@safetrust.com](mailto:sales@safetrust.com) or visit [www.safetrust.com/shop](http://www.safetrust.com/shop).

